

ECOFLOW VENTURI DAMPER

THE ULTIMATE IN CRITICAL AIRFLOW CONTROL
EXCEPTIONAL QUALITY; OUTSTANDING PERFORMANCE; UNCOMPROMISED SAFETY



setting the trend... Probe-less Technology



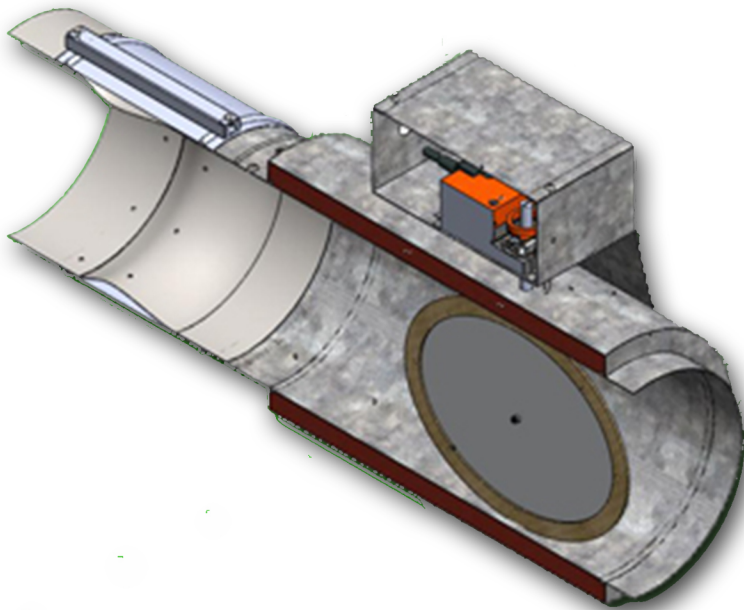
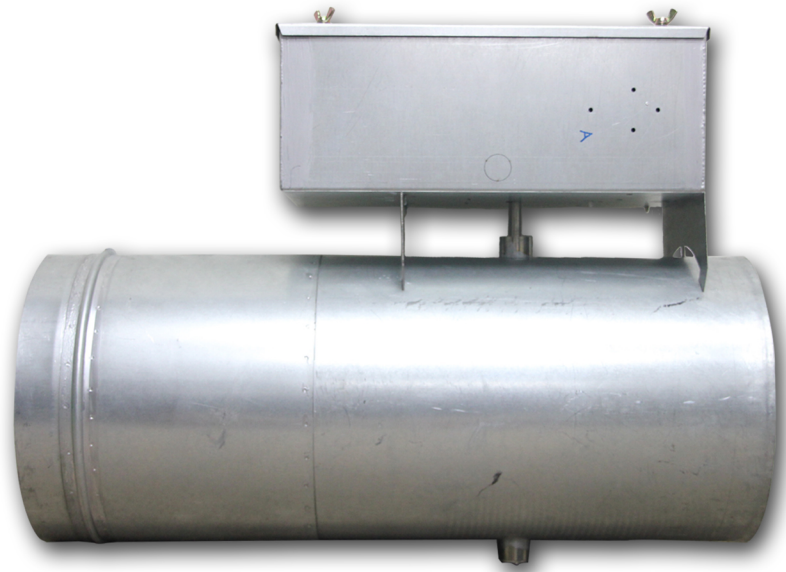
APPLICATION

The Ecoflow Venturi Damper is a dedicated product engineered for Laboratory Critical Airflow Control Solutions.

The critical control in measurement make it suitable to be used in all environment which requires accurate flow control to maintain room pressure integrity and safe working environment.

The damper integrate seamlessly with all BMS, (Building Management Systems) and most Fumehood Controllers.

Real time accurate flow measurement using probeless technology and alarm feedback makes this system an exceptional choice in the control of critical room pressurisation and also fume extraction equipment.



PERFORMANCE

The Ecoflow Venturi Damper equipped with a Fast Actuator and a Instant-Flow Feedback Card enables it to operate with Continual Real Time Flow Rate Feedback, hence allowing the control system to accurately correct for unwanted flow changes induced by external and duct static pressure changes.

Fast response feedback card – Allow continual real time accurate flow rate and alarm feedback.

1 feedback signal every 20 millisecond

Fast Actuator – **1.6sec from open to close position**



COMPETITIVE ADVANTAGE

Fire Safety – Ecoflow Venturi Damper with the selection of Stainless Steel base material offers excellent fire protection in all facilities.

Strong Chemical Resistant – with selection of stainless steel and ETFE (Ethylene Tetra Fluoroethylene) CMT™ coating, the Ecoflow Venturi Damper is able to withstand highly corrosive chemical exhaust fume.

- Our CMT™ ETFE Coating pass the requirement for Factory Mutual Class 4922
The only product of its class in the market to be able to withstand BOTH highly corrosive chemicals and High Temperature in the harshest environment

Energy Saving – with low head loss of less than 50 Pa, and able to operate under low pressure regime, Ecoflow is a green product.

Accuracy – Ecoflow Venturi Damper is equipped with a brilliant control card offering high accuracy in pressure sensing.

Low Maintenance – Being Probe-less, no internal parts involved in measurement are exposed in air stream, hence less routine maintenance. As no moving parts in the measurement, leading to cost saving in the long run.

Flexibility – Insensitive to mounting plane, so as to provide flexible installation to any orientation; horizontal or vertical, or just right after a volume control damper or Fitting without affecting the flow reading.

Ecoflow has been tested in accordance to:

- ARI 880 (AS 1217.2-1985) - Accoustic Performance
- AMCA 500D (Classified under ASME 510 Class II Damper) – Air Leakage Rating

